

September 8, 2018



## FROM THE PRESIDENT AND VICE PRESIDENT

Last month's demo was awesome, Keith showed us the Cosmic Cloud technique and walked us through the process including color changes on different backgrounds and explained the do's and don'ts, as always, he made it look easy... I encourage everyone to try this and all other demonstrations in your shop and show us your interpretation.

We had a few visitors/new members at the demo, I would like to welcome Carl Harman, Scott Riley and Ken Riley....

SWAT.... This was a fun time for all who attended...

Our club had a good turnout, we had 18 members and spouses representing Comanche Trail Woodturners... Jake Kemper won a CBN wheel, Randy Thorne won a detail gouge and Buddy Compton was also a winner, it was a great time.....

December is not far off so now is the time to think of whom they would like to elect for officers and if you would like to serv as one please feel free to contact myself or one of the other officers, this is all of our club so don't be shy...

The annual Christmas Party will be held on December 8th 2018 from 6 to 9:PM at The Manor Park in Midland, set your calendars and come hungry and enjoy a good time....

Randy Thorne will demonstrate three-sided bowl. He will turn a cube on its long axes chucked between centers The tool rest will be parallel to the block chucked between centers. Turn the block down using the push cut method. Turn from the headstock to the tail stock leaving a tenon on one corner. Hollow out the center and finish.

**PLEASE SEE RANDY'S HANDOUT BELOW**

**PHOTO'S FROM SWAT COURTESY OF GEORGE HANCOCK**



<https://www.swaturners.org/>



## Randy Thorne Demo: Turning Three-Sided Bowls



**1. Cutting & turning a cube block:** Cut a cube block (whatever size you choose; 3, 4, 5-inch cube). Note: Sand all saw marks off block. Remove chuck from headstock on lathe & place one corner of the long axes of block. Place the other end of the long axes in a live center in the tail stock, and snugly tighten tail stock. Now you're ready to turn.



2. Setup your tool rest running Parallel with the block in the lathe. Make your cuts using the push cut method, from the headstock towards the tail stock. Notice the tape on the tool rest. This is lined up even with shadow of the block, which makes it easier to make each cut, without cutting into the profile of the finished bowl.



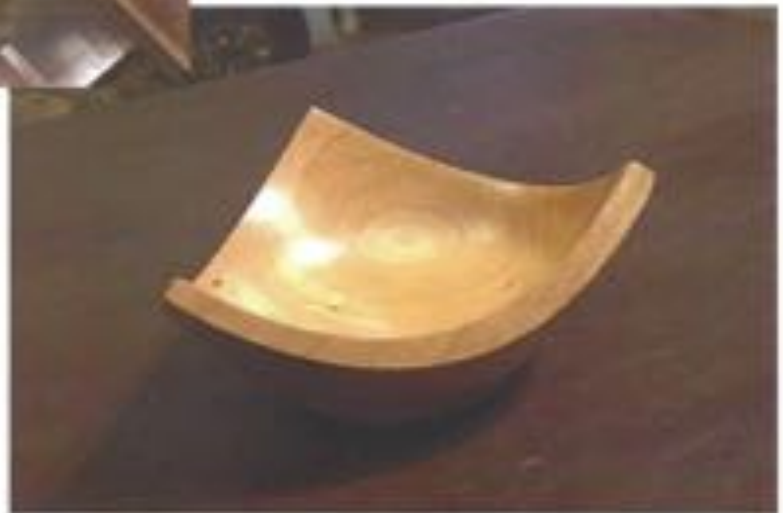
3. Turn a tenon to put in a chuck, to hollow out the inside of the bowl. Then part off excess material, put it in the chuck and hollow it out, as shown in picture No.4 (following page).



4. Hollowing out, bowl mounted in chuck.



5. Sanding bottom of bowl.



6. Finished bowl



















## Officers for 2018

President - Shawn Shirey  
Vice President/Program Chairman - Rodney Quesenberry  
Secretary/Treasurer - Chris Hughes  
Librarian - Bob Price  
Event Chairman - Jimmy Edwards  
Newsletter Editor - Vance Ford  
Publicity Chairman - Ernie Showalter  
Photographer - Ernie Showalter  
Raffle Chairman - Danny Adamson  
SWAT / AAW Representative - George Hancock  
Web Site Chairman - Keith Hughes

### MAP TO GEORGE HANCOCK'S SHOP

NORTH

Meeting:  
Saturday, September 8, 2018  
10:00 AM  
1709 Clark Street  
Midland Texas



WEST

EAST

SOUTH

## Library Corner

The library is a great resource for information on most all aspects of woodturning as well as woodworking including

Topics covered by the many books, magazine sand DVDs:  
Tools & Equipment      Turning

- Wood selection
- Sanding
- Finishes
- Safety

